

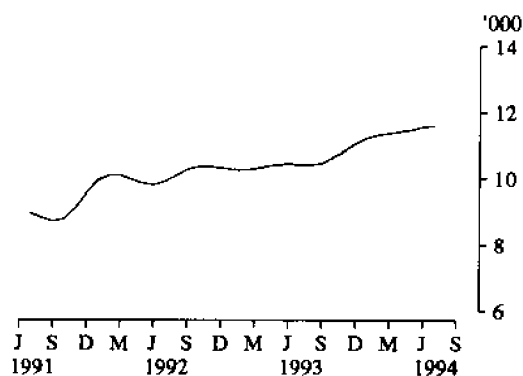
**CATALOGUE NUMBER 9303.2**  
**29 AUGUST 1994**

**MOTOR VEHICLE REGISTRATIONS, VICTORIA,  
JULY 1994**

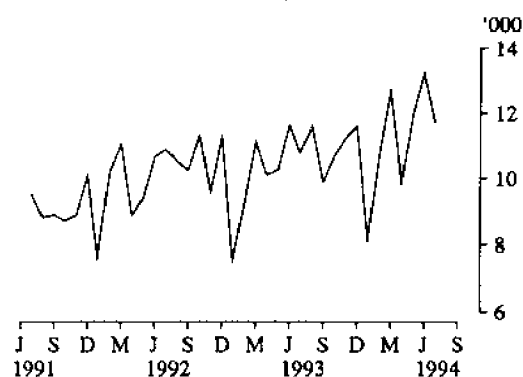
**MAIN FEATURES**

- Trend estimates of the number of new motor vehicles registered during July 1994 (11,602) showed a 0.3 per cent increase over the figure for June 1994 (11,565). The trend estimates have now recorded eleventh consecutive monthly increases since August 1993.
- In original terms the number of new motor vehicles registered during July 1994 (11,718) was 12 per cent lower than the previous month (13,246) but 9 per cent higher than July 1993 (10,784).

**NEW MOTOR VEHICLE REGISTRATIONS  
TREND ESTIMATES**



**NEW MOTOR VEHICLE REGISTRATIONS  
ORIGINAL**



**INQUIRIES**

*For further information about statistics in this publication and the availability of related unpublished statistics, contact Denis Ward or Leon Kinnersly on Melbourne (03) 615 7000; or any ABS State office*  
*For information about other ABS statistics and services contact Information Services on Melbourne (03) 615 7000; or any ABS State office.*

TABLE 1. MOTOR VEHICLES ON REGISTER(a), VICTORIA  
(<sup>'000</sup>)

<i>As at 30 June</i>	<i>Trucks</i>					<i>Buses</i>	<i>Total</i>	<i>Motor cycles</i>
	<i>Passenger vehicles</i>	<i>Light commercial vehicles</i>	<i>Rigid</i>	<i>Artic- ulated</i>	<i>Non- freight carrying</i>			
1989	2,076.2	195.7	206.5	13.1	11.7	13.9	2,517.1	68.1
1990	2,137.8	194.8	210.7	14.2	13.0	13.8	2,584.3	67.9
1991	2,226.5	349.2	87.0	14.6	11.3	14.4	2,702.9	72.2
1992	2,178.1	322.5	73.0	14.3	11.4	15.6	2,614.9	69.9
1993	2,206.6	324.9	74.2	14.6	11.7	15.9	2,648.0	70.4

(a) See Explanatory notes, paragraphs 3 to 9.

TABLE 2. NEW MOTOR VEHICLES REGISTERED(a), VICTORIA

<i>Period</i>	<i>Trucks</i>					<i>Buses</i>	<i>Total</i>	<i>Motor cycles</i>
	<i>Passenger vehicles</i>	<i>Light commercial vehicles</i>	<i>Rigid</i>	<i>Artic- ulated</i>	<i>Non- freight carrying</i>			
1991-92	98,766	11,080	1,832	406	184	649	112,917	3,878
1992-93	106,213	14,137	2,008	571	166	795	123,890	4,528
1993-94	113,249	15,442	2,077	907	119	658	132,452	4,400
1992-93 —								
May	8,741	1,229	177	52	13	74	10,286	339
June	9,627	1,643	181	83	8	118	11,660	332
1993-94 —								
July	9,361	1,120	160	70	11	62	10,784	316
August	10,191	1,123	174	70	18	46	11,622	325
September	8,440	1,164	172	68	10	40	9,894	347
October	9,222	1,100	171	78	10	48	10,629	356
November	9,660	1,286	168	82	7	45	11,248	404
December	10,005	1,264	196	86	14	43	11,608	411
January	7,148	806	109	49	6	55	8,173	411
February	9,288	1,138	156	70	3	45	10,700	423
March	10,864	1,484	204	78	10	73	12,713	391
April	8,347	1,272	136	71	14	45	9,885	337
May	9,970	1,619	198	97	10	56	11,950	329
June	10,753	2,066	233	88	6	100	13,246	350
1994-95 —								
July	9,827	1,463	227	124	2	75	11,718	378

(a) See Explanatory notes, paragraphs 3 to 9.

**TABLE 3. NEW MOTOR VEHICLES REGISTERED VICTORIA(a), ORIGINAL AND SEASONALLY ADJUSTED**

Period	Passenger vehicles		Other vehicles(b)		Total(b) (c)		
	Original	Seasonally adjusted	Original	Seasonally adjusted	Original	Seasonally adjusted	Trend estimate(d)
MELBOURNE STATISTICAL DIVISION							
1992-93 —							
May	6,851	7,192	904	826	7,755	8,017	7,962
June	7,555	6,918	1,117	1,029	8,672	7,947	7,992
1993-94 —							
July	7,366	7,103	826	736	8,192	7,839	7,989
August	8,111	7,752	831	815	8,942	8,567	7,976
September	6,786	6,405	909	868	7,695	7,273	7,998
October	7,364	7,285	855	877	8,219	8,162	8,109
November	7,672	7,540	934	942	8,606	8,482	8,283
December	7,885	7,143	981	994	8,866	8,137	8,438
January	5,628	8,067	601	856	6,229	8,923	8,563
February	7,334	7,840	835	920	8,169	8,760	8,643
March	8,594	7,797	1,170	1,069	9,764	8,866	8,673
April	6,428	6,973	992	1,057	7,420	8,030	8,689
May	7,673	7,573	1,242	1,088	8,915	8,661	8,718
June	8,336	8,014	1,564	1,432	9,900	9,446	8,753
1994-95 —							
July	7,674	7,445	1,082	1,016	8,756	8,461	8,751
TOTAL VICTORIA							
1992-93 —							
May	8,741	8,981	1,545	1,429	10,286	10,410	10,429
June	9,627	8,793	2,033	1,791	11,660	10,584	10,440
1993-94 —							
July	9,361	8,958	1,423	1,272	10,784	10,230	10,428
August	10,191	9,687	1,431	1,398	11,622	11,085	10,418
September	8,440	8,017	1,454	1,420	9,894	9,436	10,467
October	9,222	9,240	1,407	1,457	10,629	10,698	10,627
November	9,660	9,585	1,588	1,657	11,248	11,242	10,855
December	10,005	9,202	1,603	1,647	11,608	10,849	11,062
January	7,148	10,026	1,025	1,453	8,173	11,479	11,226
February	9,288	9,918	1,412	1,531	10,700	11,449	11,328
March	10,864	9,788	1,849	1,689	12,713	11,477	11,374
April	8,347	9,230	1,538	1,601	9,885	10,831	11,420
May	9,970	9,699	1,980	1,770	11,950	11,470	11,490
June	10,753	10,010	2,493	2,188	13,246	12,197	11,565
1994-95 —							
July	9,827	9,593	1,891	1,760	11,718	11,353	11,602

(a) See Explanatory notes, paragraphs 3 to 9. (b) Excludes motor cycles, tractors, plant and equipment, caravans and trailers. (c) See paragraph 2 of the Explanatory notes. (d) Trend estimate (smoothed seasonally adjusted) series are revised as additional observations become available. See paragraph 11 of the Explanatory notes.

**TABLE 4. MAKES OF NEW PASSENGER VEHICLES REGISTERED(a), VICTORIA, JULY 1994**

Make	Vehicle tare weight (kilograms)						Total	Per cent	M.S.D.
	Up to 900	901 to 1,100	1,101 to 1,300	1,301 to 1,500	Over 1,500	Not stated			
Ford	88	456	98	1,742	232	-	2,616	26.6	1,788
Holden	157	72	653	1,231	71	-	2,184	22.2	1,752
Honda	4	178	135	12	2	-	331	3.4	292
Hyundai	3	251	95	7	-	-	356	3.6	277
Mazda	111	84	143	3	13	-	354	3.6	309
Mitsubishi	118	111	149	758	89	-	1,225	12.5	1,011
Nissan	1	170	46	28	88	-	333	3.4	259
Toyota	12	257	470	280	303	-	1,322	13.5	1,092
Other makes	162	156	398	206	184	-	1,106	11.3	894
<b>Total</b>	<b>656</b>	<b>1,735</b>	<b>2,187</b>	<b>4,267</b>	<b>982</b>	<b>-</b>	<b>9,827</b>	<b>100.0</b>	<b>7,674</b>

(a) See Explanatory notes, paragraphs 3 to 9.

**TABLE 5. MAKES OF NEW LIGHT COMMERCIAL VEHICLES REGISTERED(a), VICTORIA, JULY 1994**

Make	Vehicle tare weight (kilograms)						Total	Per cent	M.S.D.
	Up to 900	901 to 1,100	1,101 to 1,300	1,301 to 1,500	Over 1,500	Not stated			
Ford	2	4	113	239	31	-	389	26.6	237
Holden	-	-	106	102	60	-	268	18.3	160
Mazda	-	1	23	49	13	-	86	5.9	64
Mitsubishi	1	2	125	36	24	-	188	12.9	124
Nissan	-	1	7	33	79	-	120	8.2	38
Toyota	-	3	93	168	92	-	356	24.3	169
Other makes	16	14	2	11	13	-	56	3.8	36
<b>Total</b>	<b>19</b>	<b>25</b>	<b>469</b>	<b>638</b>	<b>312</b>	<b>-</b>	<b>1,463</b>	<b>100.0</b>	<b>828</b>

(a) See Explanatory notes, paragraphs 3 to 9.

**TABLE 6. MAKES OF NEW RIGID TRUCKS REGISTERED(a), VICTORIA, JULY 1994**

Make	Gross vehicle mass (tonnes) (b)							Total	Per cent	M.S.D.	
	Up to 4	4.001 to 8	8.001 to 12	12.001 to 16	16.001 to 20	20.001 to 30	Over 30				
Ford	-	2	9	5	-	-	-	3	19	8.4	11
Hino	-	-	-	1	17	6	-	4	28	12.3	19
International	-	-	-	-	-	4	-	7	11	4.8	8
Isuzu	-	6	14	21	18	8	-	9	76	33.5	56
Mazda	-	1	8	8	-	-	-	17	17	7.5	13
Mitsubishi	-	1	16	7	12	3	-	3	42	18.5	31
Nissan	-	-	1	3	1	2	-	3	10	4.4	6
Toyota	1	2	7	7	-	-	-	17	17	7.5	16
Other makes	1	-	1	-	-	1	-	4	7	3.1	5
<b>Total</b>	<b>2</b>	<b>12</b>	<b>56</b>	<b>52</b>	<b>48</b>	<b>24</b>	<b>-</b>	<b>33</b>	<b>227</b>	<b>100.0</b>	<b>165</b>

(a) See Explanatory notes, paragraphs 3 to 9. (b) Gross vehicle mass is the maximum permissible weight of the loaded vehicle.

**TABLE 7. MAKES OF NEW ARTICULATED TRUCKS REGISTERED(a), VICTORIA, JULY 1994**

Make	Gross combination mass (tonnes) (b)							Not stated	Total	Per cent	M.S.D.
	Up to 16	16.001 to 20	20.001 to 24	24.001 to 30	30.001 to 34	34.001 to 40	Over 40				
Ford	-	6	-	1	-	-	-	-	7	5.6	1
International	-	9	1	5	-	-	-	2	17	13.7	1
Kenworth	2	14	-	20	-	-	-	2	38	30.6	22
Mack	1	7	-	10	-	-	-	-	18	14.5	7
Mercedes-Benz	-	2	2	2	-	-	-	-	6	4.8	4
Scania	-	2	1	-	-	-	-	-	3	2.4	1
Volvo	1	1	2	5	-	-	-	-	9	7.3	4
Western Star	-	8	-	-	-	-	-	-	8	6.5	1
Other makes	1	8	1	5	1	-	-	2	18	14.5	5
<b>Total</b>	<b>5</b>	<b>57</b>	<b>7</b>	<b>48</b>	<b>1</b>	<b>-</b>	<b>-</b>	<b>6</b>	<b>124</b>	<b>100.0</b>	<b>46</b>

(a) See Explanatory notes, paragraphs 3 to 9. (b) Gross combination mass is the maximum permissible weight of the prime mover plus attached loaded trailer.

**TABLE 8. MAKES OF NEW NON-FREIGHT CARRYING TRUCKS AND BUSES REGISTERED(a), VICTORIA, JULY 1994**

Make	Non-freight carrying trucks				Buses			
	M.S.D.	Rest of Victoria	Total	Per cent	M.S.D.	Rest of Victoria	Total	Per cent
Ford	-	-	-	-	-	-	-	-
Hino	-	-	-	-	-	5	5	6.7
Isuzu	-	-	-	-	-	-	-	-
Mazda	-	-	-	-	1	-	1	1.3
Mercedes-Benz	-	-	-	-	1	2	3	4.0
Mitsubishi	1	-	1	50.0	-	-	-	-
Nissan	-	-	-	-	-	-	-	-
Scania	-	-	-	-	3	-	3	4.0
Toyota	-	1	1	50.0	31	25	56	74.7
Other makes	-	-	-	-	6	1	7	9.3
<b>Total</b>	<b>1</b>	<b>1</b>	<b>2</b>	<b>100.0</b>	<b>42</b>	<b>33</b>	<b>75</b>	<b>100.0</b>

(a) See Explanatory notes, paragraphs 3 to 9.

**TABLE 9. NEW MOTOR CYCLES REGISTERED, VICTORIA, JULY 1994**

Make	Cubic capacity of engine (cc)							Total	Per cent	M.S.D.
	Up to 50	51 to 150	151 to 250	251 to 500	501 to 750	Over 750	Not stated			
Harley Davidson	-	-	-	-	-	50	-	50	13.2	29
Honda	-	44	21	-	33	16	-	114	30.2	73
Kawasaki	-	1	27	-	13	11	-	52	13.8	31
Suzuki	2	1	19	4	8	5	-	39	10.3	24
Yamaha	2	2	36	3	15	5	-	63	16.7	27
Other makes	19	1	2	6	4	28	-	60	15.9	40
<b>Total</b>	<b>23</b>	<b>49</b>	<b>105</b>	<b>13</b>	<b>73</b>	<b>115</b>	<b>-</b>	<b>378</b>	<b>100.0</b>	<b>224</b>

**TABLE 10. NEW MOTOR VEHICLES REGISTERED(a), BY NUMBER OF CYLINDERS,  
VICTORIA, JULY 1994**

<i>Number of cylinders</i>	<i>Passenger vehicles</i>	<i>Light commercial vehicles</i>	<i>Trucks</i>			<i>Buses</i>	<i>Total</i>	<i>Per cent</i>
			<i>Rigid</i>	<i>Artic- ulated</i>	<i>Non- freight carrying</i>			
Four	4,442	969	105	19	1	32	5,568	47.5
Six	4,900	439	121	99	1	43	5,603	47.8
Eight	340	20	1	5	-	-	366	3.1
Other	58	15	-	1	-	-	74	0.6
Not stated	87	20	-	-	-	-	107	0.9
<b>Total</b>	<b>9,827</b>	<b>1,463</b>	<b>227</b>	<b>124</b>	<b>2</b>	<b>75</b>	<b>11,718</b>	<b>100.0</b>

(a) See Explanatory notes, paragraphs 3 to 9.

**TABLE 11. NEW PLANT AND EQUIPMENT, CARAVANS, AND TRAILERS  
REGISTERED, JULY 1994**

<i>Type</i>	<i>M.S.D.</i>	<i>Rest of Victoria</i>	<i>Total</i>
Mobile plant, equipment, etc.	44	21	65
Caravans	98	104	202
Trailers	569	554	1,123
<b>Total</b>	<b>711</b>	<b>679</b>	<b>1,390</b>

## EXPLANATORY NOTES

### Introduction

This publication contains detailed information regarding registrations of new motor vehicles and includes particulars of passenger vehicles and light commercial vehicles classified by make and tare, and rigid and articulated trucks by make and gross vehicle mass/gross combination mass. Details of registrations of non-freight carrying trucks, buses, motor cycles, trailers, caravans, and plant and equipment are also included, as are particulars of motor vehicles on register.

### Scope and coverage

2. Motor vehicle registration statistics are obtained from data made available by VIC ROADS and reflect the information as recorded in registration documents. In these statistics, registrations mean registrations processed by VIC ROADS during the period. In Victoria, registrations are not processed by the VIC ROADS until some time after the actual date of registration; for this reason, a number of registrations processed in a given month actually relate to vehicles registered prior to that month. During July 1994 the proportion of registrations processed by VIC ROADS that relate to the reference month was 97 per cent, with the remaining 3 per cent relating to earlier periods.

The statistics include vehicles with diplomatic and consular plates and government-owned vehicles other than those belonging to the defence services.

Although registration of recreation vehicles intended for use in public places other than roads is compulsory, particulars of such vehicles are excluded from statistics contained in this publication.

Recent changes in processing procedures implemented by the Roads Corporation may impact on statistics contained in this publication. Care should therefore be taken when using these statistics.

### Classification of vehicles

3. The decoding of the Vehicle Identification Number (VIN) has resulted in better identification of each vehicle's bodycode and consequently classification of vehicles to particular categories. Vehicles such as minibuses which, in the old system, had been classified to cars and station wagons in some States but to buses in other States, are now consistently classified. Similarly, in the old system utilities and cab-chasses, which were sometimes classified to small trucks, are now consistently classified to utilities. In addition, duplicate records, out of scope vehicles and those vehicles not registered for the first time can now be more accurately identified and therefore excluded from the statistics.

### Vehicle Type Definitions

4. *Passenger Vehicles.* Vehicles constructed primarily for the carriage of less than 10 passengers (including the driver). Included are cars, station wagons, 4WD passenger vehicles and forward control passenger vehicles.

5. *Light Commercial Vehicles.* Vehicles constructed primarily for the carriage of goods and do not exceed 3.5 tonnes gross vehicle mass (GVM). Included are utilities, panel vans, cab-chassis and forward control vehicles (whether 4WD or not).

6. *Rigid Trucks.* Vehicles constructed primarily for load carrying with gross vehicle mass (GVM) exceeding 3.5 tonnes. Included are normal rigid trucks with a tow bar, draw bar or other non-articulated coupling on the rear for use with a trailer or dolly.

7. *Articulated Trucks.* Vehicles constructed primarily for load carrying consisting of a prime mover having no significant load carrying area but with a turn table device which can be linked to a trailer. The gross combination mass (GCM) will exceed 3.5 tonnes with or without a trailer.

8. *Non-freight Carrying Trucks.* Includes specialist vehicles such as ambulances or mobile cranes or vehicles fitted with special purpose equipment and having no goods carrying capacity.

9. *Omnibuses.* Includes all passenger vehicles having more than nine seats, including the driver.

### Seasonal adjustment

10. Original and seasonally adjusted registrations of new motor vehicles are shown in Table 3. The two component series 'Passenger vehicles' and 'Other vehicles' are each adjusted separately, and the adjusted figures for total registrations are obtained by adding together the two component series. In the seasonally adjusted series, account has been taken of normal seasonal factors and 'trading day' effects (arising from the varying numbers of Sundays, Mondays, Tuesdays, etc. in the month) and the effect of movement in the date of Easter which may, in successive years, affect figures for different months.

Seasonally adjusted statistics should not be regarded as in any way definitive. In interpreting particular seasonally adjusted statistics it is important to bear in mind the methods by which they have been derived and the limitations to which the methods used are subject.

Seasonal adjustment is a means of removing the estimated effects of normal seasonal variation from the series so that the effects of other influences on the series may be more clearly recognised. Seasonal adjustment procedures do not aim to remove the irregular or non-seasonal influences which may be present in any particular months, such as the effect of introducing new models or of industrial disputes. Irregular influences that are highly volatile can make it difficult to interpret the movement of the series even after adjustment for seasonal variation.

11. The seasonally adjusted series can, however, be smoothed to reduce the impact of the irregular component in the adjusted series. This smoothed seasonally adjusted series is called a trend estimate. Trend estimates of motor vehicle registration statistics are shown in Table 3. The trend estimates have been derived by applying a 13-term Henderson-weighted moving average to the series.

While this technique enables smoothed data for the latest period to be produced, it does result in revisions to the smoothed series for the most recent months as additional observations become available. There may also be revisions as a result of changes in the original data, and as a result of the re-estimation of the seasonal factors.

#### Motor vehicles on register

12. Censuses of motor vehicles on register have been conducted in respect of 31 December 1955 and 1962, and 30 September 1971, 1976, 1979, 1982, 1985, 1988 and 1991. From December 1976, details of Commonwealth Government-owned vehicles on register are only available at 31 December each year.

For 30 June estimates, the previous 31 December figures for Commonwealth Government-owned vehicles are used. Motor vehicles on register at a given date are vehicles for which either fees were paid in advance, on that date, or retrospectively. Figures for motor vehicles on register prior to June 1982 were derived from estimates of the previous Census of Motor Vehicles. From June 1982 onwards, motor vehicles on register figures have been collected from the Roads Corporation.

#### Unpublished tables

13. Various tabulations of a more detailed nature than those contained in this publication are available in the form of computer printouts for inspection in this Office. It is recommended that inquiries regarding the availability of unpublished statistics be made by telephoning in the first instance. In general a charge is made for supply of such tabulations.

#### Related publications

14. Users may also wish to refer to the following ABS publications which are available on request:  
*Registrations of New Motor Vehicles, Australia, Preliminary* (9301.0) (monthly) (\$10.70)  
*Motor Vehicle Registrations, Australia* (9303.0) (monthly) (\$10.70)  
*Motor Vehicle Registrations, Australia* (9304.0) (annual) (\$15.00)  
*Motor Vehicle Census, Australia* (9309.0) (irregular)

Current publications produced by the ABS are listed in the *Catalogue of Publications, Australia* (1101.0). The ABS also issues, on Tuesdays and Fridays, a *Publications Advice* (1105.0) which lists publications to be released in the next few days. These are available from any ABS Office.

#### Electronic services

A large range of data is available via on-line services, diskette, magnetic tape, tape cartridge and CD ROM. For more details about our electronic data services, contact any ABS Office.

#### Symbols and other usages

r figure or series revised since previous issue  
 - nil or rounded down to zero  
 M.S.D. Melbourne Statistical Division  
 n.a. not available

Where figures have been rounded, discrepancies may occur between sums of the component items and totals.

**STUART JACKSON**  
*Deputy Commonwealth Statistician*

